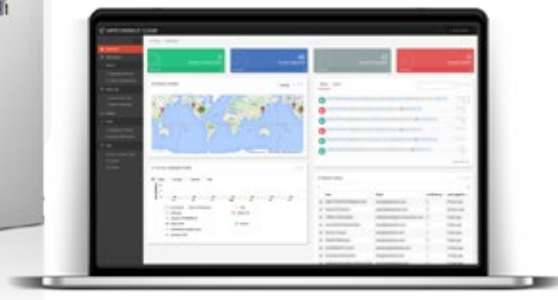


# SAFECONSOLE<sup>®</sup> ENCRYPTION MANAGEMENT PLATFORM



MANAGE ALL YOUR  
**SAFECONSOLEReady<sup>®</sup>**  
DEVICES FROM A SECURE  
COMMAND CENTER



## NEVER LOSE TRACK OF YOUR SENSITIVE DATA

DataLocker encryption solutions make it simple to secure data for transport, storage and sharing. Now SafeConsole allows you to centrally manage those endpoints, no matter where they go.

SafeConsole is your secure storage command center for encrypted endpoints, including the DL3<sup>®</sup> encrypted external hard drive, Sentry<sup>®</sup> encrypted flash drive, SafeCrypt<sup>®</sup> cloud encryption gateway and EncryptDisc<sup>®</sup> self-encrypting optical media.\* Other SafeConsoleReady<sup>®</sup> products include devices from our partners like Kingston<sup>®</sup> and CardWave<sup>®</sup>.

SafeConsole is ideal for mobile employees that are handling sensitive data or intellectual property in multiple locations. SafeConsole allows you to administer hundreds or thousands of encrypted endpoints with efficiency, visibility and control.

## FEATURES OF SAFECONSOLE



**Inventory.** Monitor all your encrypted endpoints, including their location anywhere in the world. Integrate with Active Directory to track users, assigned devices and connected computers with ease.



**Audit.** See which files are saved to or deleted from your encrypted endpoints at any given moment. Use a complete audit trail to monitor activity by user, including connections, login failures, resets and loss reports.



**Control.** Enforce policies such as password rules, file-type restrictions or geographic boundaries. Reset passwords, switch endpoints into read-only mode, and even remotely wipe them in case of loss or theft.



**Report.** Gain a big-picture view of your encrypted endpoints across the globe. Access reports by configuration, geographic location, status, updates, recent activity and more.

\* SafeCrypt and EncryptDisc support coming soon.

## ADDITIONAL FEATURES

### GEOLOCATION AND GEOFENCING

Use IP-based location tracking to pinpoint the location of your encrypted endpoints anywhere in the world. SafeConsole can also "geofence" your devices, making them accessible only within specific geographic boundaries.

### EASY AND RAPID DEPLOYMENT

SafeConsole offers an easy deployment for small and large organizations with connection to Active Directory (AD). Administrators can authenticate to access SafeConsole with their AD credentials. Install SafeConsole on your server, then deploy drives to user(s). Each device is registered to a specific user in SafeConsole and linked to the user in the corporate directory (if available). The all-in-one installation has the power to serve large device deployments in the thousands if required.

## FLEXIBLE DEPLOYMENT OPTIONS

### CLOUD-HOSTED SERVICE

- Up and running in minutes
- Log in and manage from anywhere
- Email and phone support
- Priced per endpoint/year plus a one-time base fee

### ON-PREM

- Requires a dedicated Windows-based server
- Log in and manage from anywhere
- Modest hardware and bandwidth requirements
- Ideal for deployments of 300 or more endpoints

Visit [datalocker.com/safeconsole](http://datalocker.com/safeconsole) for additional details, demos and pricing.

## SALES CONTACTS

**WEBSITE**  
datalocker.com

**US AND CANADA**  
sales@datalocker.com  
+1 913 310 9088

federal@datalocker.com

**EUROPE**  
emea@datalocker.com

**ASIA PACIFIC**  
apac@datalocker.com

**LATIN AMERICA**  
latam@datalocker.com